

PowerBrick

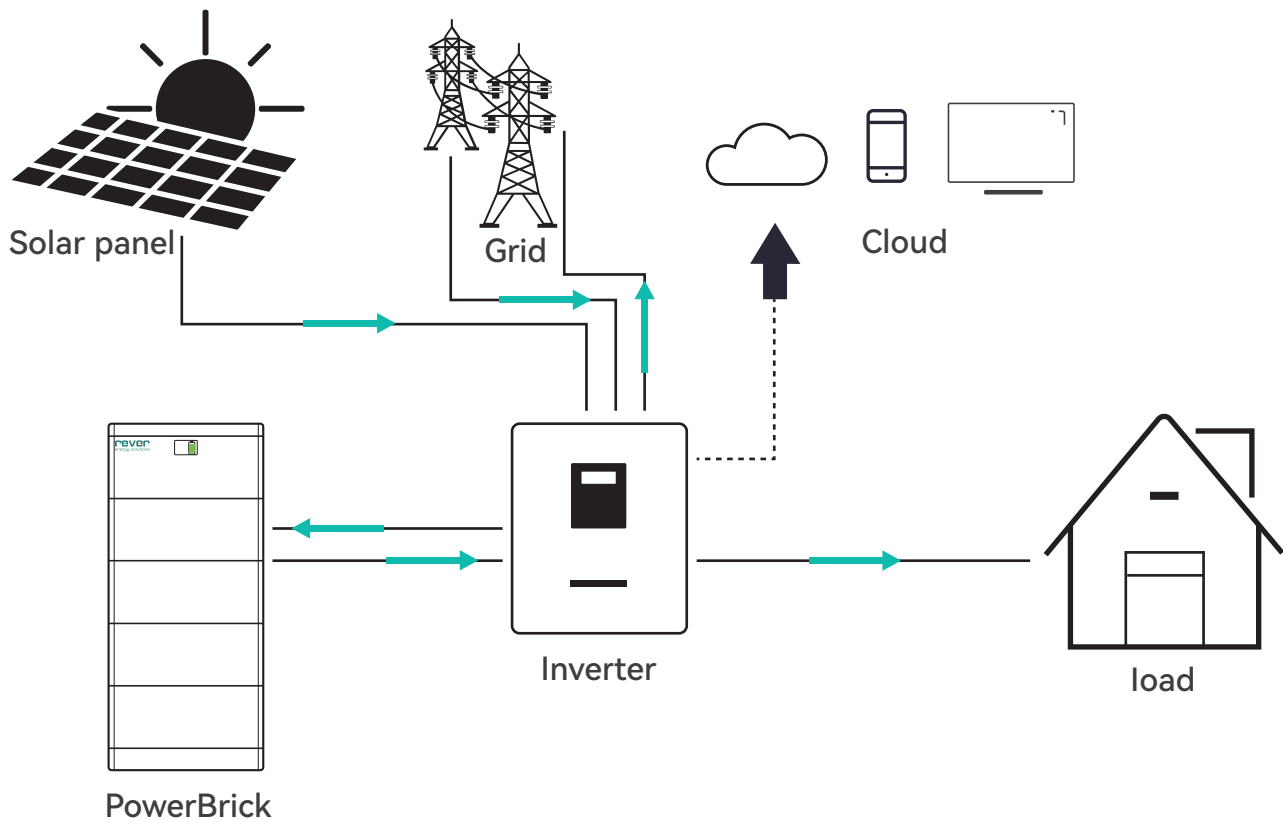
Household Energy Storage

Capacity
15.35kWh~30.72kWh

Smart Household Energy Storage System

- ◆ High-voltage LiFePO₄ battery solution, Single module is 51.2V 100Ah 5.12kWh.
- ◆ 3 to 6 layers recommended.
- ◆ Inverter you need to choose 380V 3phase input and output, common is 8-15KW inverter.
- ◆ Lithium Iron Phosphate (LFP) Battery: Maximum Safety, Life Cycle and Power.
- ◆ Applicable on-grid or off-grid or hybrid solar energy storage system.
- ◆ Self-consumption optimization for residential and commercial applications.
- ◆ Modular design for easy transport and installation.

Wiring Diagram



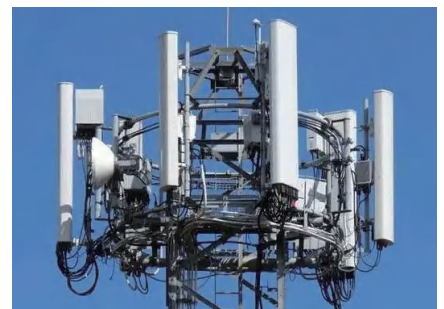
Application Scenarios



Villa



Farm



Communication base station



Household



Nomadic area

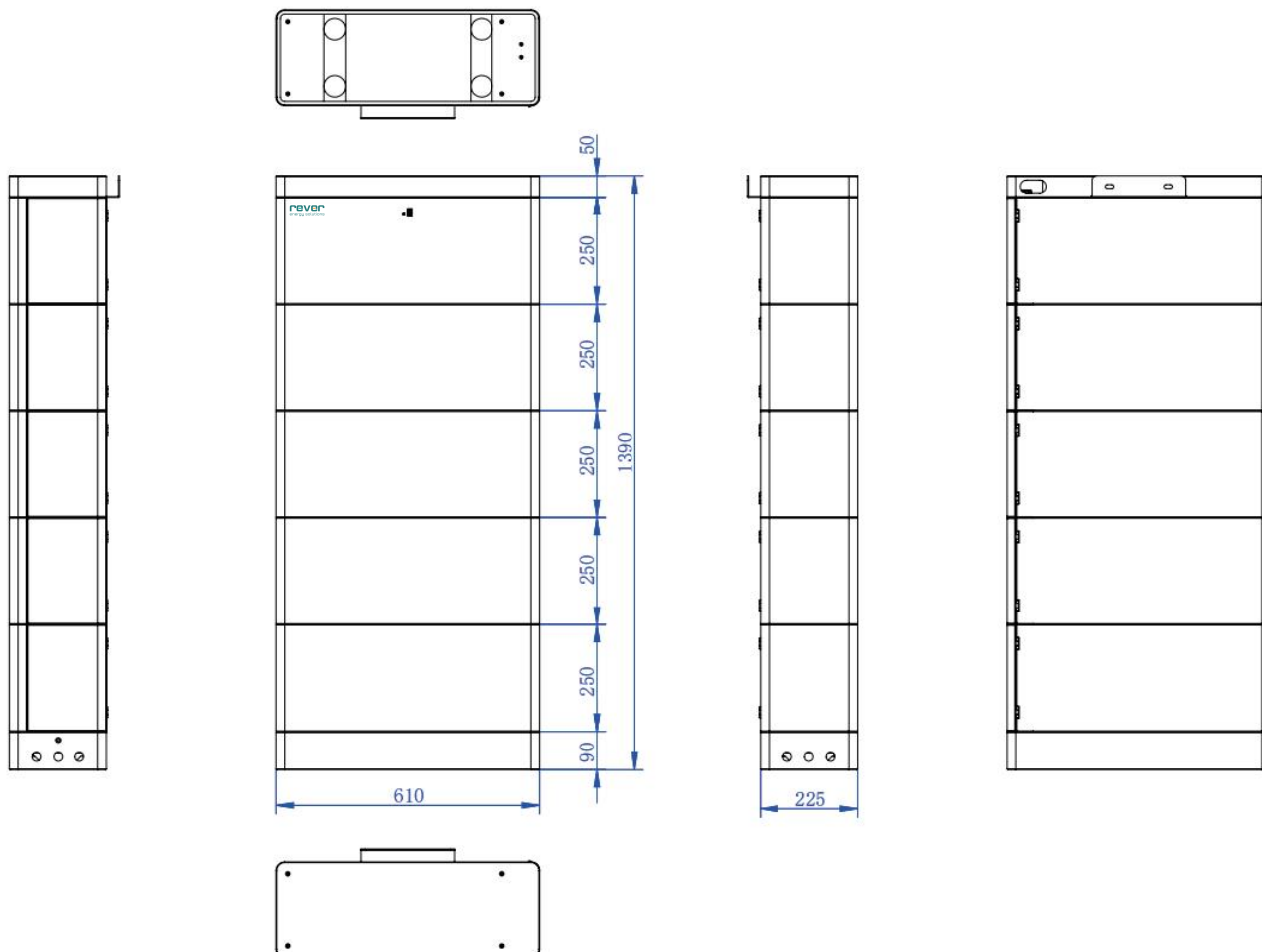


Field power supply

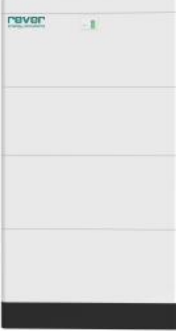
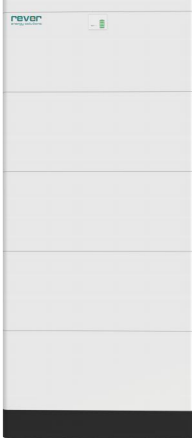
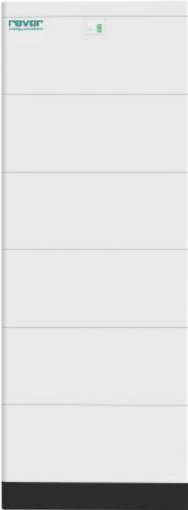
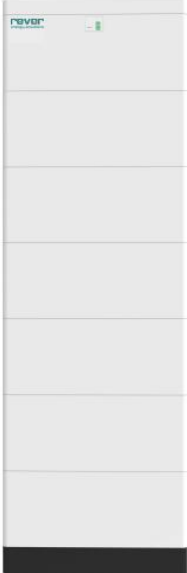
Compatible with inverter brands



Dimensions



Specification Parameters

Technical Specification				
Model	SHB5003L2	SHB5004L2	SHB5005L2	SHB5006L2
Number of battery modules	3	4	5	6
Picture				
Energy(kWh)	15.35	20.48	25.6	30.72
Operating Voltage Range (V)	129.6~168.48	172.8~224.64	216~280.8	259.2~350.4
Dimension (L*W*H)mm	610*225*1140	610*225*1390	610*225*1640	610*225*1890
Net Weight(kg)	170	223	276	329
Recommend charge current(A)	25~50			
Max continue charge current(A)	100			
Max continue discharge current(A)	100			
Display	The information of Battery, such as SOC, battery voltage and so on			
Communication	Support RS485 / CAN			
Operating temperature (°C)	-20 ~ 55			
Environment	Indoor			
Relative humidity	5% ~ 95%			
Protection	IP65			
Cooling	Natural convection			
Cell technology	Lithium-iron phosphate (LiFePO4)			
Life cycle	6000 times @80%DOD			
Single module Technical Specification				
Dimension (L*W*H)mm	High Voltage BMS Box: 610*225*250 Single Battery Module: 610*225*250			
Battery module weight(kg)	52			